

INITIAL CLINICAL EXPERIENCES WITH BIOSORB™ DRESSING: VENOUS LEG ULCER

Ivins NM, Harding KG CBE,
Welsh Wound Innovation Centre

A 65-year-old gentleman with a history of chronic kidney disease, Type 1 diabetes and iron deficiency anaemia. He has suffered with recurrent venous leg ulcerations for 18 years. The current wound is 9 months in duration and has shown little progress towards healing.

On initial assessment the wound measured 3.5cm x 3.0cm x 0.1cm and the wound bed had 50% hyper granulation tissue present along with slough and an island of epithelium.

Exudate levels were moderate requiring twice weekly dressing changes with the patient continuing to wear his multilayer compression bandages. He was uncomplaining of any wound-related pain throughout the dressing evaluation and by the end of the assessment (week 4), the wound had reduced in size to 2.5cm x 1.1cm x 0.1cm and the hyper granulating tissue had resolved.

Outcomes:

- The dressing contained the exudate well and there were no surrounding skin problems.
- The patient found the dressing stayed in place and was comfortable to wear under compression.
- The clinicians found that the dressing was easy to apply, conformable and atraumatic on removal.

Patient data and photos courtesy of Ivins NM, Harding KG CBE, Welsh Wound Innovation Centre.

As with any case study, the results and outcomes should not be interpreted as a guarantee or warranty of similar results. Individual results may vary depending on the patient's circumstances and condition.

NOTE: Specific indications, contraindications, warnings, precautions and safety information may exist for Systagenix and KCI (Acelity companies) products. Please consult a healthcare provider and product instructions for use prior to application. Rx only.



Figure A: Initial assessment.



Figure B: Dressing change.



Figure C: Week 4.

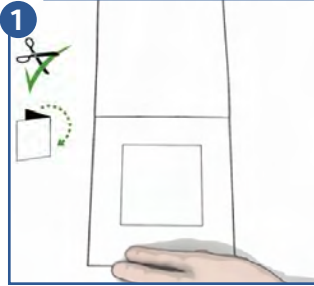
USER GUIDE

Before application

Refer to the instructions for use.

Clean the wound carefully. The skin surrounding the wound should be clean and dry. Remove the pouch from the box.

Dressing preparation



1. The size of the dressing should be selected and cut as necessary to overlap the wound edges by approximately 1cm. Keep the product away from the wound while cutting it to size.

Dressing application



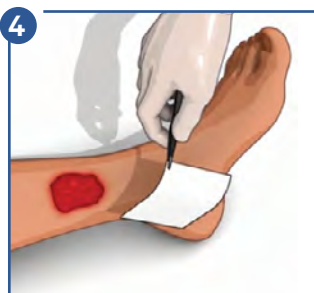
1. Place the dressing on the moist wound, overlapping the wound edges by approximately 1cm. If there is a low amount of exudate present, moisten the dressing with sterile physiological saline solution (0.9%).
2. For deep wounds, use the ribbon variant. Pack wounds lightly, leaving approximately 2.5cm overlapping the wound edges to facilitate removal.

Secondary dressing application



1. Apply a suitable secondary dressing to keep the product in place.

Dressing change and removal



1. The dressing should be changed when medically indicated (e.g. when the dressing has reached its absorbent capacity or when good wound care practice dictates a change is needed). The interval between changes should be no more than 7 days.
2. Should the dressing adhere to wounds with lower exudate levels, moisten it with sterile physiological saline solution (0.9%) before changing the dressing so that healing process is not disturbed. Any gel residue on the wound should be removed when cleansing the wound. Deep wounds in particular should be well irrigated.

WHAT IS IT?

BIOSORB™ Gelling Fiber Dressing is a soft, conformable non-woven dressing made from sodium carboxymethyl cellulose and strengthening cellulose Fibers.

WHEN TO USE IT

BIOSORB™ Gelling Fiber Dressing is intended for use in the management of moderate to heavily exuding acute or chronic wounds including:

- Lower leg ulcers, pressure ulcers (Stage II to IV) and diabetic ulcers
- Surgical wounds (e.g. post-operative, wounds left to heal by secondary intent and donor sites)
- Partial thickness burns
- Traumatic wounds (e.g. abrasions and lacerations)
- Oncology wounds

BIOSORB™ Gelling Fiber Dressing has a supportive effect in that it protects the wound edge and surrounding skin from maceration¹.



The product can also be used under compression.



When dry, BIOSORB™ Gelling Fiber Dressing can easily be cut with sterile scissors.

Good to know...

In Vitro evidence demonstrated BIOSORB™ Dressing to have 43% greater absorbency than AQUACEL® Extra™¹

Item code	Size	Eaches per carton/box	HCPCS
BGF0505U	2" x 2"	10ea/ct - 5ct/box	A6196
BGF1012U	4" x 5"	10ea/ct - 5ct/box	A6197
BGF1515U	6" x 6"	5ea/ct - 5ct/box	A6197
BGF0245U	1" x 18" (rope)	5ea/ct - 5ct/box	A6199